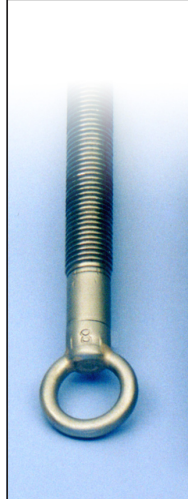




## T-Mac® Portable Earthing Equipment

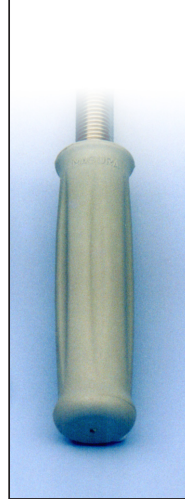
### Shotgun Ring & Rubber Handles

Shotgun Ring  
(add suffix "S")



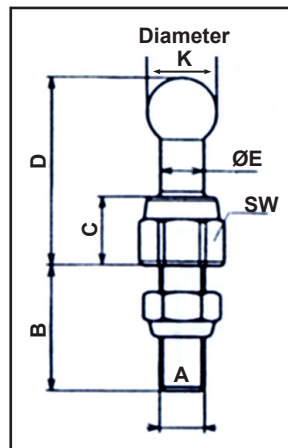
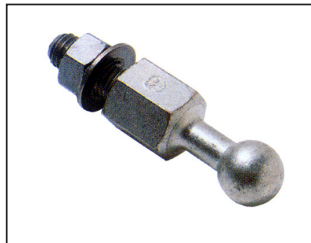
S

Rubber Handle  
(add suffix "RH")



RH

### Ball Pins - Straight



#### Description:

Used as a fixed point earthing connection with CL50B & CL95B earthing clamps. Ball pin electroplated copper, stainless steel threaded bolt and self-locking nut.

*Note: Other bolt diameters & lengths are available together with 45 & 90 degree angled ball pins. Contact us for additional information.*

Code	Dimensions							Earthing Clamp Type	Max Rating kA 0.5 sec	Torque Nm	Weight g
	K	SW	A	B	C	D	E				
754235	20	24	M12	35	24	59	11	CL50	33.3	80	19
755245	25	27	M12	45	25	68	15	CL95	39.7	80	27