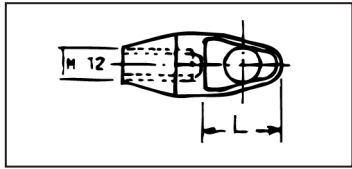




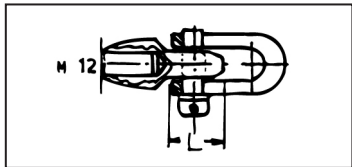
Fibreglass Duct Rod Accessories

End Fittings



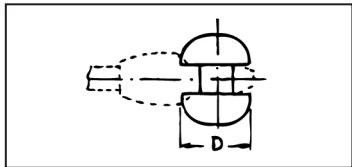
ALUMINIUM PULLING EYE

Code: 25818253530: L = 30mm
25818266600: L = 40mm



ALUMINIUM PULLING EYE WITH SHACKLE

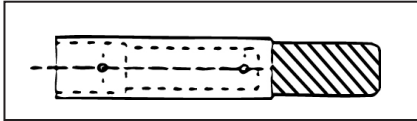
Code: 25818283530 L = 30mm
25818286600 L = 40mm



ROLLER GUIDE TIP

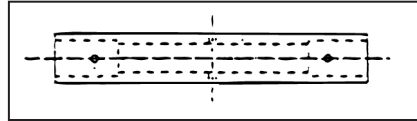
Code: 25818343530 D = 27mm
25814236600 D = 40mm

Repair Parts



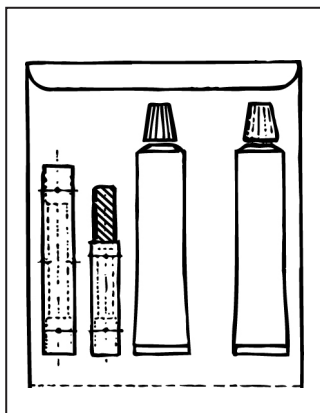
M12 EXTERNAL THREADED END FITTING

Code: 25818003214 for 9mm OD duct rod



STRAIGHT REPAIR SLEEVE

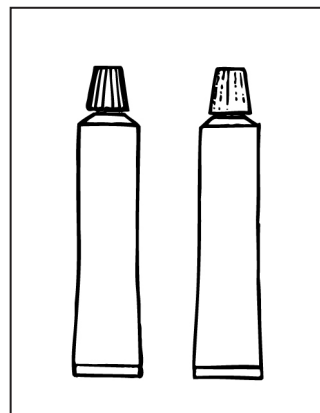
Code: 25815806600 for 9mm OD duct rod



REPAIR KIT

Code: 25815906600 (for 9mm OD duct rod)

Consisting of glue, 1 x M12 external threaded end fitting plus 1 x straight repair sleeve.



GLUE

Code: 28518116600