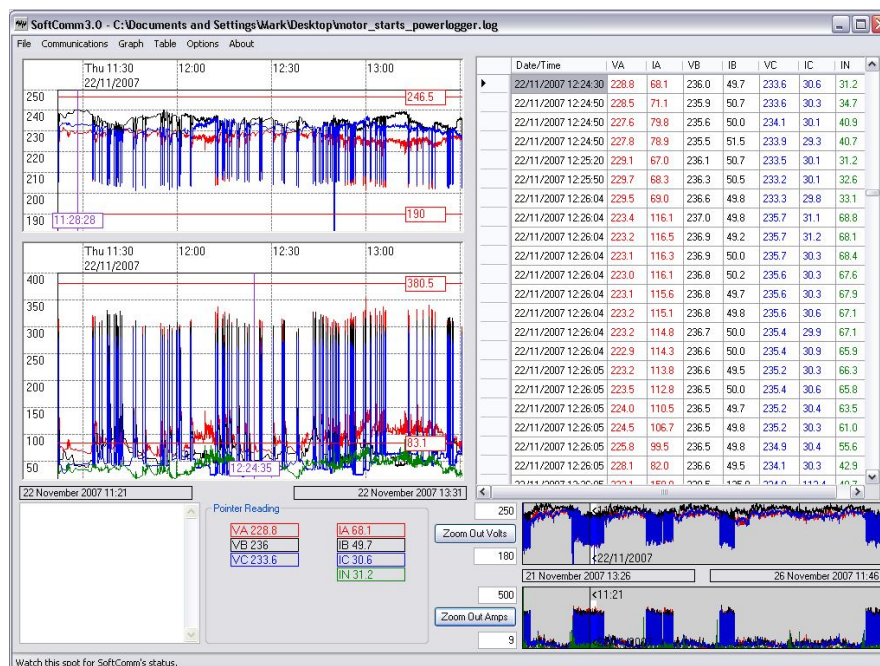


Technical Data Sheet

T-Mac® Safe-logger Data Recorder

Ph: (+61) 07 3826 6000
Fax: (+61) 07 3826 6066
www.thew.com.au



DESCRIPTION:

The Safelogger is a mains powered unit used to measure voltage levels present on the M.E.N. earth connection in a customer's premises. The unit is specifically designed for customer service and supply quality investigations in residential areas. (commonly known as "tingles" investigation.) The Safelogger may be used on the LV installation supplied from a SWER (single wire earth return) transformer. The Safelogger should NOT be connected to the SWER HV earth under any circumstances.

SPECIFICATIONS:

Inputs

Voltage measurement range: 0 – 12V AC/DC
Frequency: 0-5KHz AC/DC
Accuracy: $\pm 1\%$ of reading

Data Recording

Sampling Rate: 32,894 samples/sec.
Signal processing: True RMS analog to DC conversion
Maximum recording duration: 21 days
Recording Interval: 1 minute preset
Resolution: 0.1V
Sensitivity (for sags/surges): 20ms

Memory

Onboard memory: FLASH™ memory, software programmable (including low battery alarm)
Endurance of calibration values: 40 years without battery power
Data Connection: Waterproof 9 pin RS232 standard
USB adaptor available for USB connection
Data Downloading: To PC via RS232 or USB data link
Data Processing: By proprietary software supplied with the Safe-logger

Power Supply

Mains Connection:	3pin GPO with CLIPSAL™ weatherproof shroud.
Power Supply:	180V – 280Vac single-phase mains voltage
Backup Power Supply:	4x AA cells alkaline batteries.
Power Supply Current:	< 100mA
Standby Current:	50µA (nominal)

Operating Temperature

-4°C to 50°C

Case

Dimensions:	165x125x75 without protective cover 175x135x90 with protective cover, hanger 235High
Weight:	Approx. 1.1Kg without protective cover Approx. 1.65Kg with protective cover

Protection & Safety

IP Rating:	IP65
Case:	Double insulated
Electrical Test:	1000V Insulation resistance
Supply Protection:	Both supply lines fused @100ma
Voltage Measurement Protection:	High-impedance voltage sensing input
Data port:	Opto-isolated RS232 data port

Software

Softcomm – Recording Software
SoftCal – Calibration Software

Main features

Download at the click of a button.
Data displayed in a graphical format, easy zoom function.
Overlay Charts for comparison.
Export data into Excel.
Calibration via SoftCal Software package.

Software

Operating System:	Win 95/98/NT/ME/2000/XP.
Additional Requirements:	Microsoft .Net Framework 1.1 (Included On Software CD)
Availability:	CD or E-mail – Free of charge

Hardware - Minimum Requirements

Processor:	P3 400Mhz or equivalent (P4 recommended)
Memory:	128M (512M recommended)
Disk Space:	25M (4M if .NET framework installed)

Accessories

Outdoor protective cover:	PVC Box, with line attachment. (Not for use on poletop)
Carry Bag:	Vinyl Ripstop Bag with clear PVC front
USB adaptor:	RS232 to USB
RS232 Communications Cable:	Included