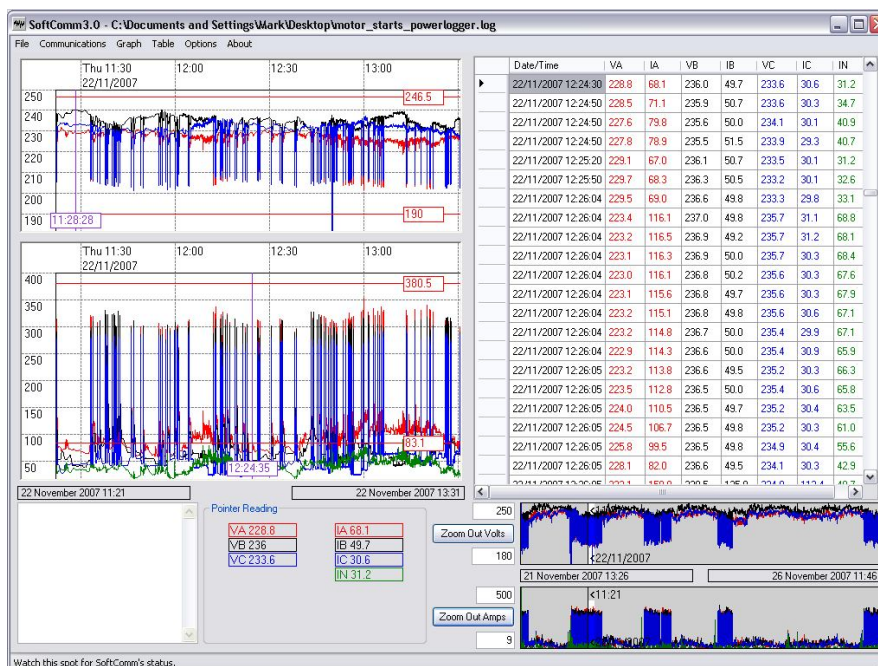


# Technical Data Sheet

## T-Mac® Flexi-logger Data Recorder

Ph: (+61) 07 3826 6000  
Fax: (+61) 07 3826 6066  
www.thew.com.au



### DESCRIPTION:

The Flexi-logger is a battery-powered unit used to measure and record the 3 phase maximum demand on a LV circuit on the distribution network. The unit is specifically designed for use in overload investigations and the determination of the cause of protection operation (blown fuses etc.) on the LV network.

The maximum demand can be read from the LCD without a PC.

### SPECIFICATIONS:

#### Inputs

Current measurement range: 0-2000A AC  
Frequency: 50Hz – (other frequencies available on request)  
Accuracy:  $\pm 1\%$  of full scale

#### Data Recording

Sampling Rate: 1 sample/sec  
Signal processing: True RMS analog converter and averaging circuit, continuous current monitoring  
Maximum recording duration: 14 days  
Recording Interval: 1 minute preset  
Resolution: 4 amps  
Demand interval displayed: 1 to 60min. adjustable

---

## Memory

Onboard memory:	FLASH™ memory, software programmable (including low battery alarm)
Endurance of calibration values:	40 years without battery power
Data Connection:	Waterproof 9 pin RS232 standard USB adaptor available for USB connection
Data Downloading:	To PC via RS232 or USB data link
Data Processing:	By proprietary software supplied with the Flexi-logger

## Power Supply

Power Supply:	4x C-cell batteries.
Power Supply Current:	5mA nominal
Standby Current:	50µA (nominal)

## Operating Temperature

-4°C to 50°C

## Case

Dimensions:	165x125x75 without protective cover 175x135x90 with protective cover, hanger 235 high
Weight:	Approx. 1.45Kg without protective cover Approx. 2Kg with protective cover

## Protection & Safety

IP Rating:	IP65
Category Rating:	Flexible CT Probes - Cat III – 600V MAX
Electrical Test:	Probes Tested during manufacture to IEC61010

## Software

Softcomm – Recording Software  
SoftCal – Calibration Software

### *Main features*

Download at the click of a button.  
Data displayed in a graphical format, easy zoom function.  
Overlay Charts for comparison.  
Export data into Excel.  
Calibration via SoftCal Software package.

### *Software*

Operating System:	Win 95/98/NT/ME/2000/XP.
Additional Requirements:	Microsoft .Net Framework 1.1 (Included On Software CD)
Availability:	CD or E-mail – Free of charge

### *Hardware - Minimum Requirements*

Processor:	P3 400Mhz or equivalent (P4 recommended)
Memory:	128M (512M recommended)
Disk Space:	25M (4M if .NET framework installed)

## Accessories

Outdoor protective cover:	PVC Box, with line attachment.
Carry Bag:	Vinyl Ripstop Bag with clear PVC front
USB adaptor:	RS232 to USB
RS232 Communications Cable:	Included
2000A Flexible CT probes:	CAT III 600V MAX